



Peepers aren't just for the privileged:  
reframing goals will help wetlands address  
environmental justice

Beck Swab (they/them), PhD

Root & Spiral

Beck.swab@proton.me

**ROOT & SPIRAL**



# Peepers aren't just for the privileged

## Talk outline

What is environmental justice?

How can sociological frameworks (such as the hierarchy of needs) help us better connect wetland conservation and environmental justice?

Example: Clean Ohio Fund

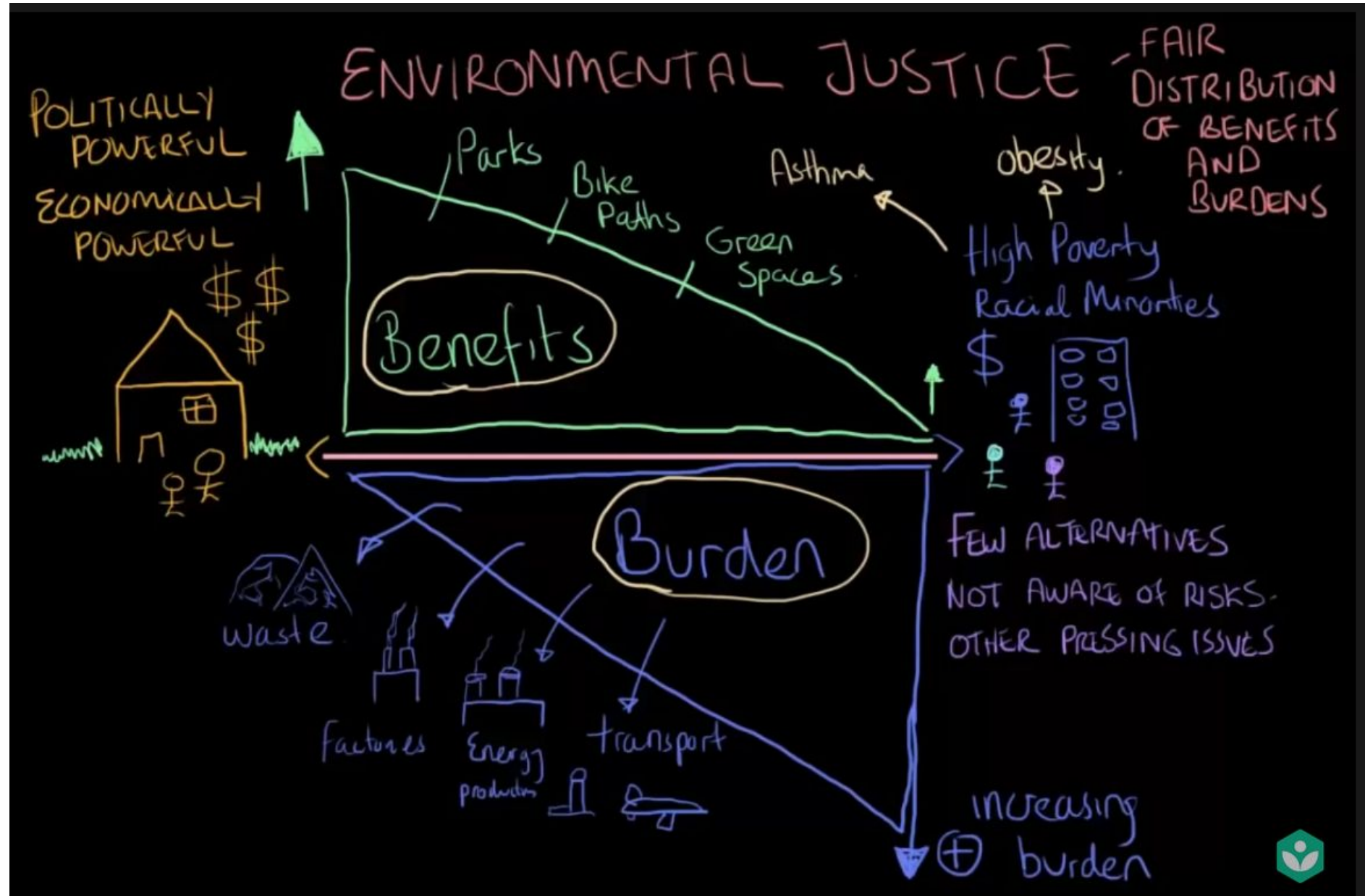
How can improving environmental justice help us create wetland conservation lasting in perpetuity?

**ROOT & SPIRAL**





# Environmental justice



From: Khan Academy

<https://www.youtube.com/watch?v=0L2xCwD5RNI&t=265s>

ROOT & SPIRAL

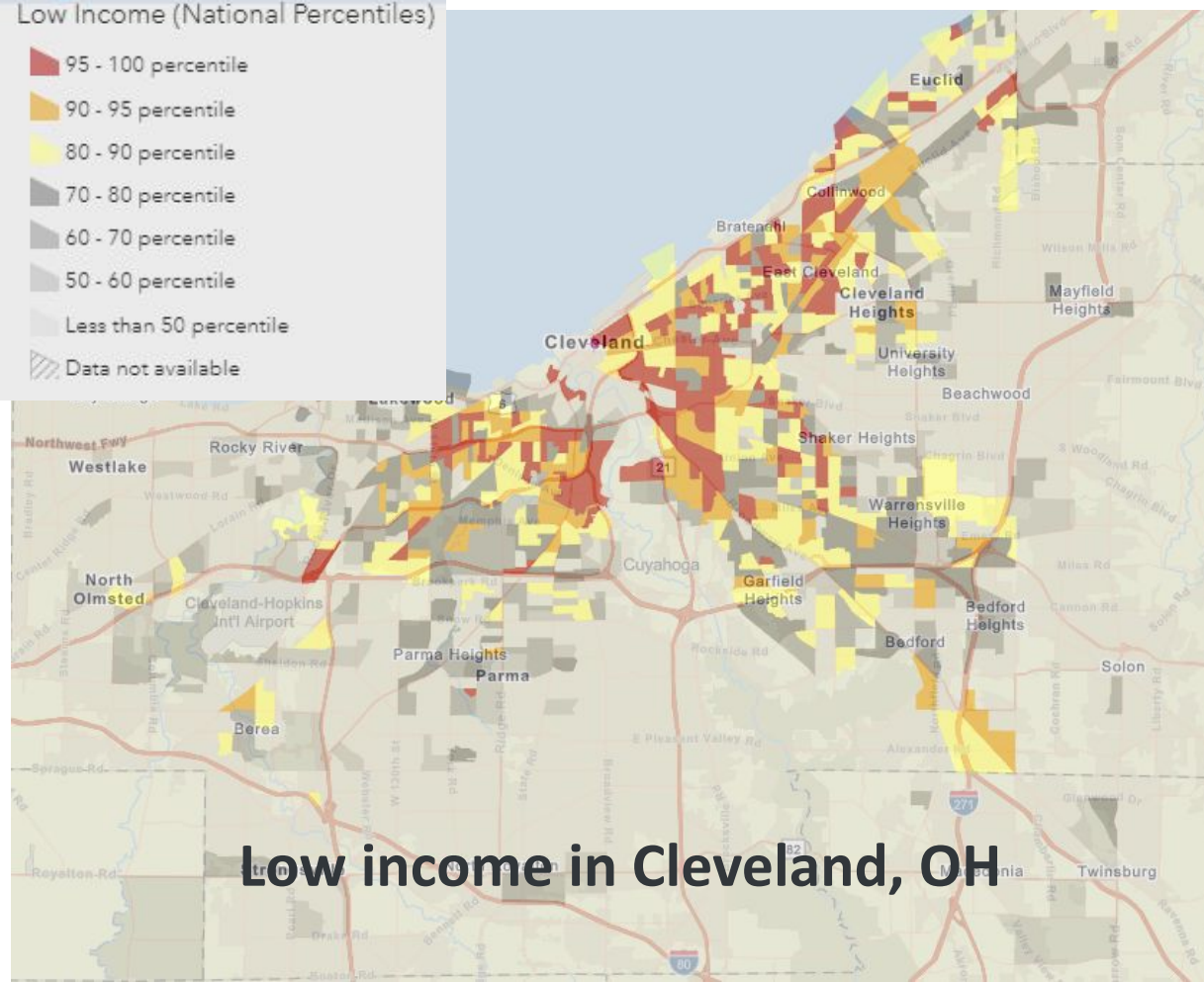


# Environmental Justice in Cleveland

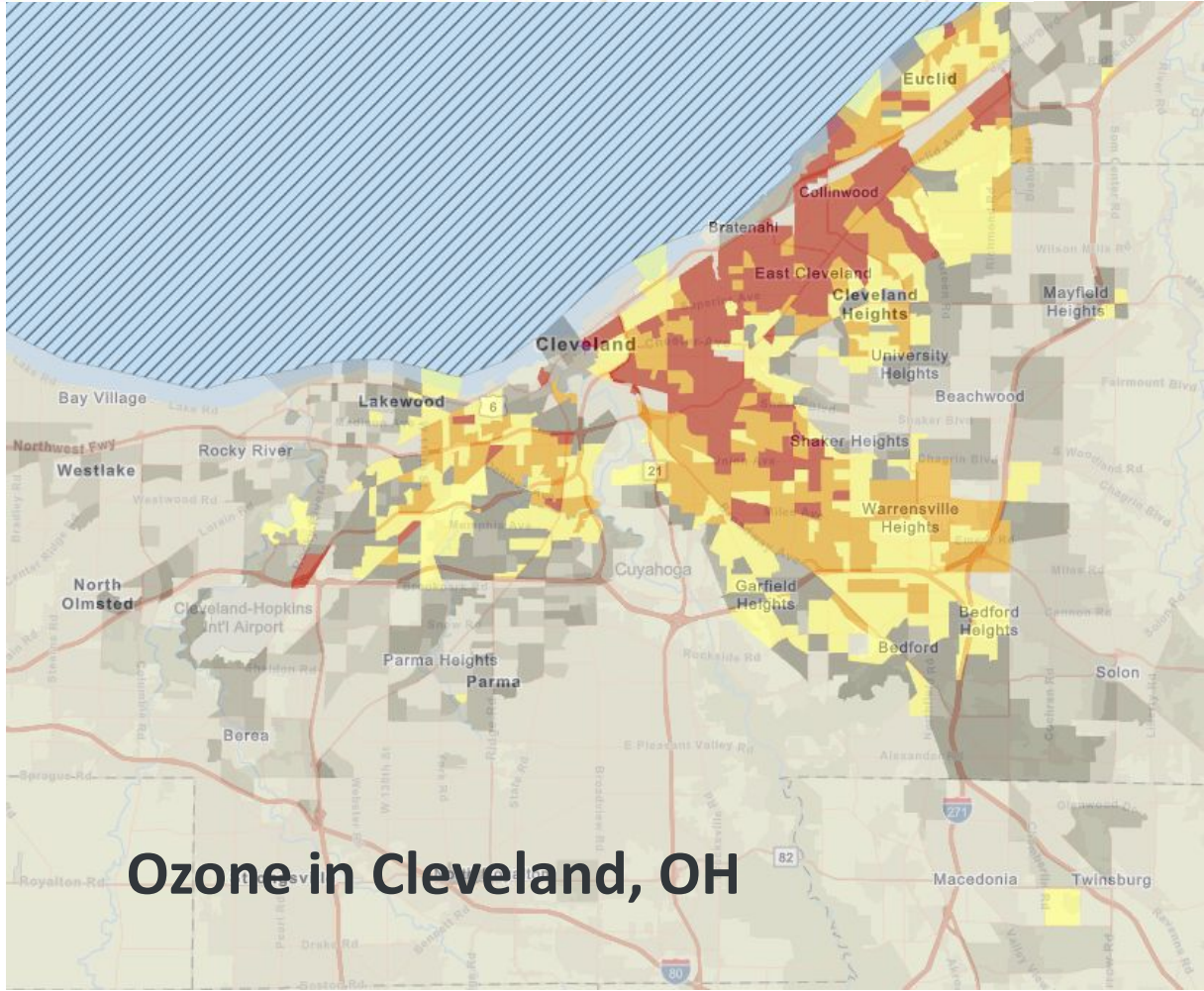


**EPA EJScreen** EPA's Environmental Justice Screening and Mapping Tool (Version 2.2)

- Low Income (National Percentiles)
- 95 - 100 percentile
  - 90 - 95 percentile
  - 80 - 90 percentile
  - 70 - 80 percentile
  - 60 - 70 percentile
  - 50 - 60 percentile
  - Less than 50 percentile
  - Data not available



**Low income in Cleveland, OH**



**Ozone in Cleveland, OH**

# Environmental justice



**What groups of people are especially vulnerable to environmental hazards, have less of a voice in the environmental decision-making process, or both?**

- People of color
- Womxn
- Children
- Indigenous communities
- Farmers
- Migrants
- Refugees
- People with lower socioeconomic status
- Any underrepresented or marginalized group  
-(religious minorities, LGBTQIA+, etc.)

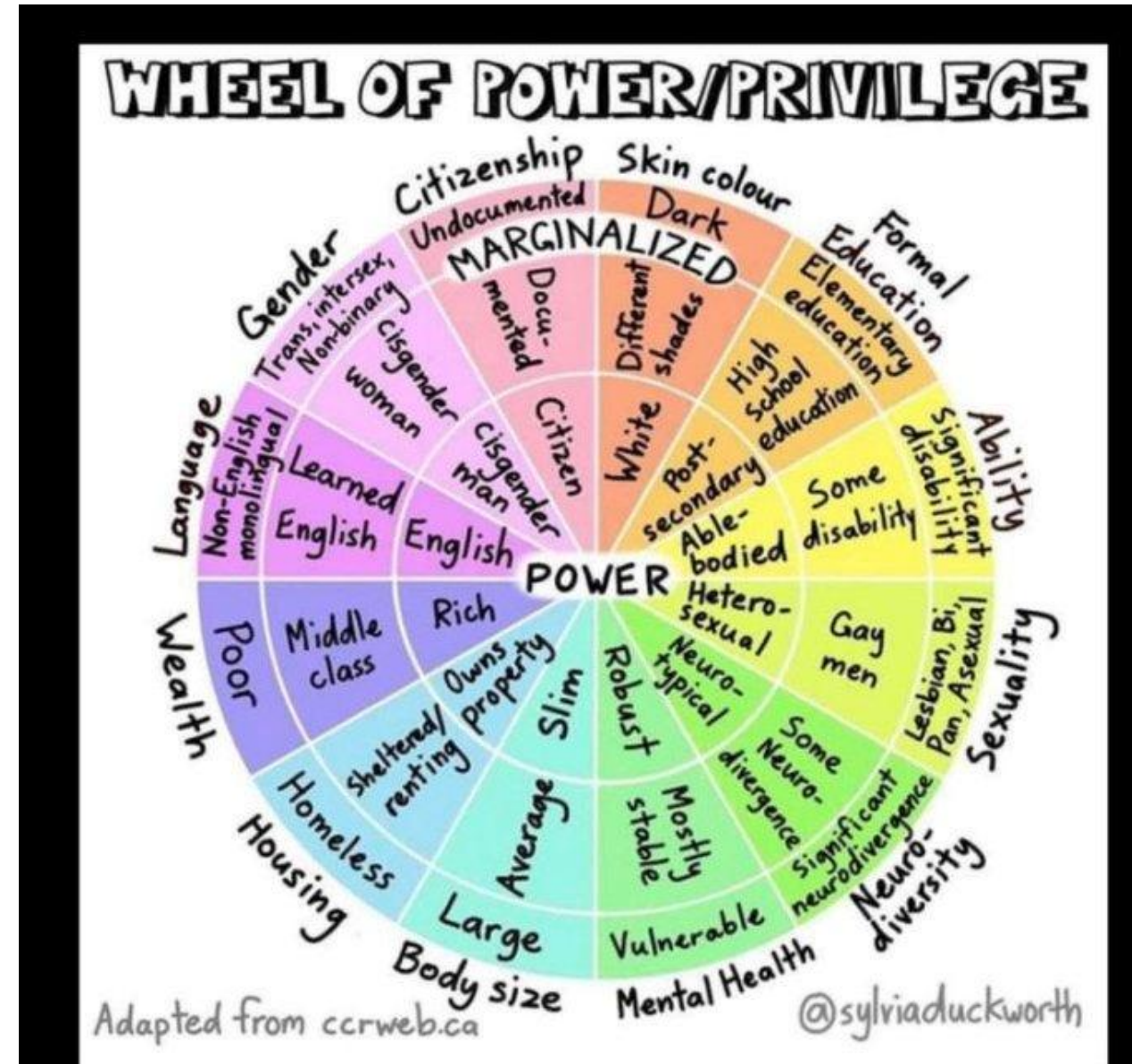


# Environmental justice

What groups of people are especially vulnerable to environmental hazards, have less of a voice in the environmental decision-making process, or both?

- People of color
- Womxn
- Children
- Indigenous communities
- Farmers
- Migrants
- Refugees
- People with lower socioeconomic status
- Any underrepresented or oppressed group
  - (religious minorities, LGBTQIA+, etc.)

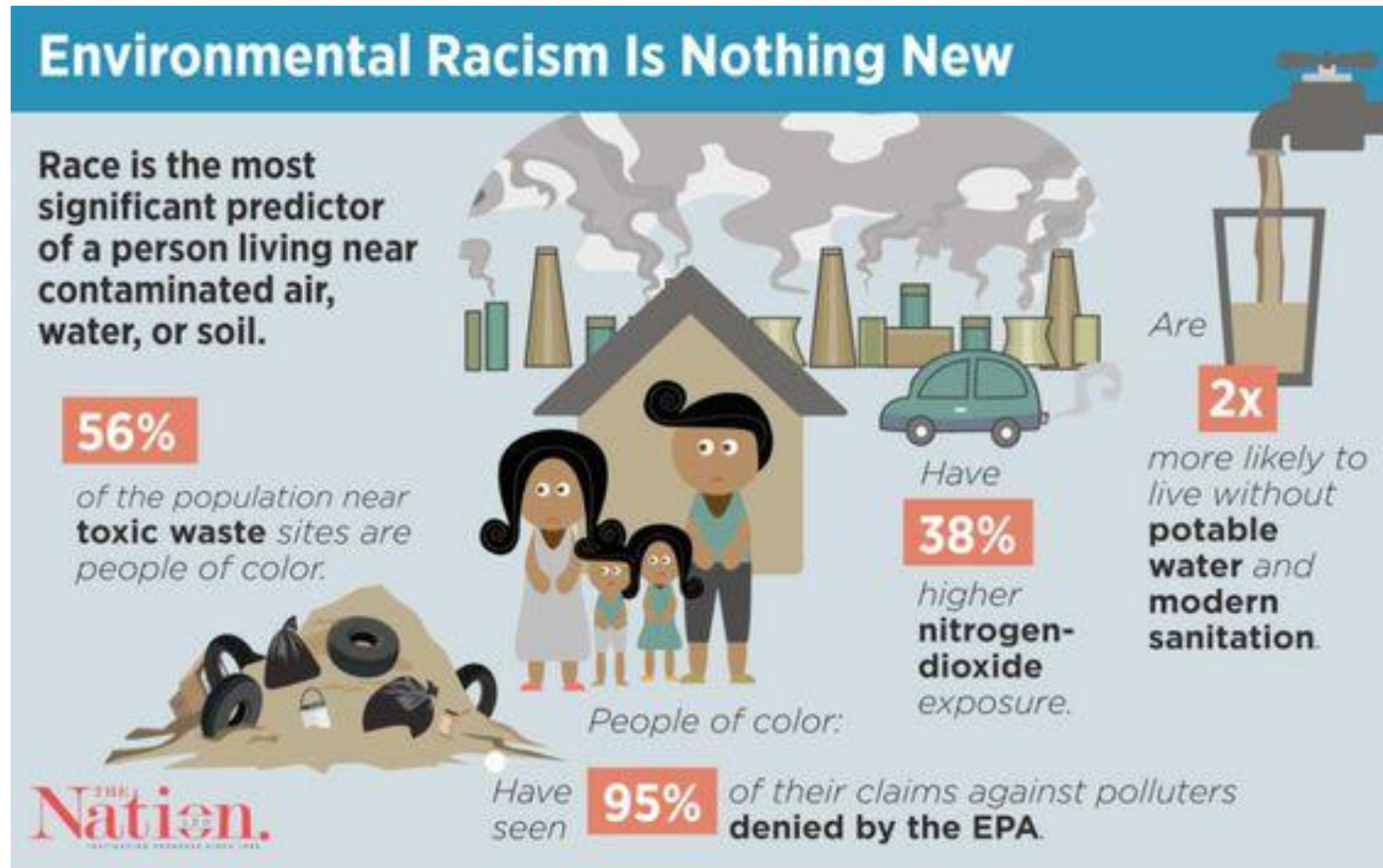
**ROOT & SPIRAL**



# Environmental justice

**Environmental racism-** concept that people of color are burdened with *disproportionate exposures* to environmental hazards that affect their health, safety, and quality of life.

**ROOT & SPIRAL**



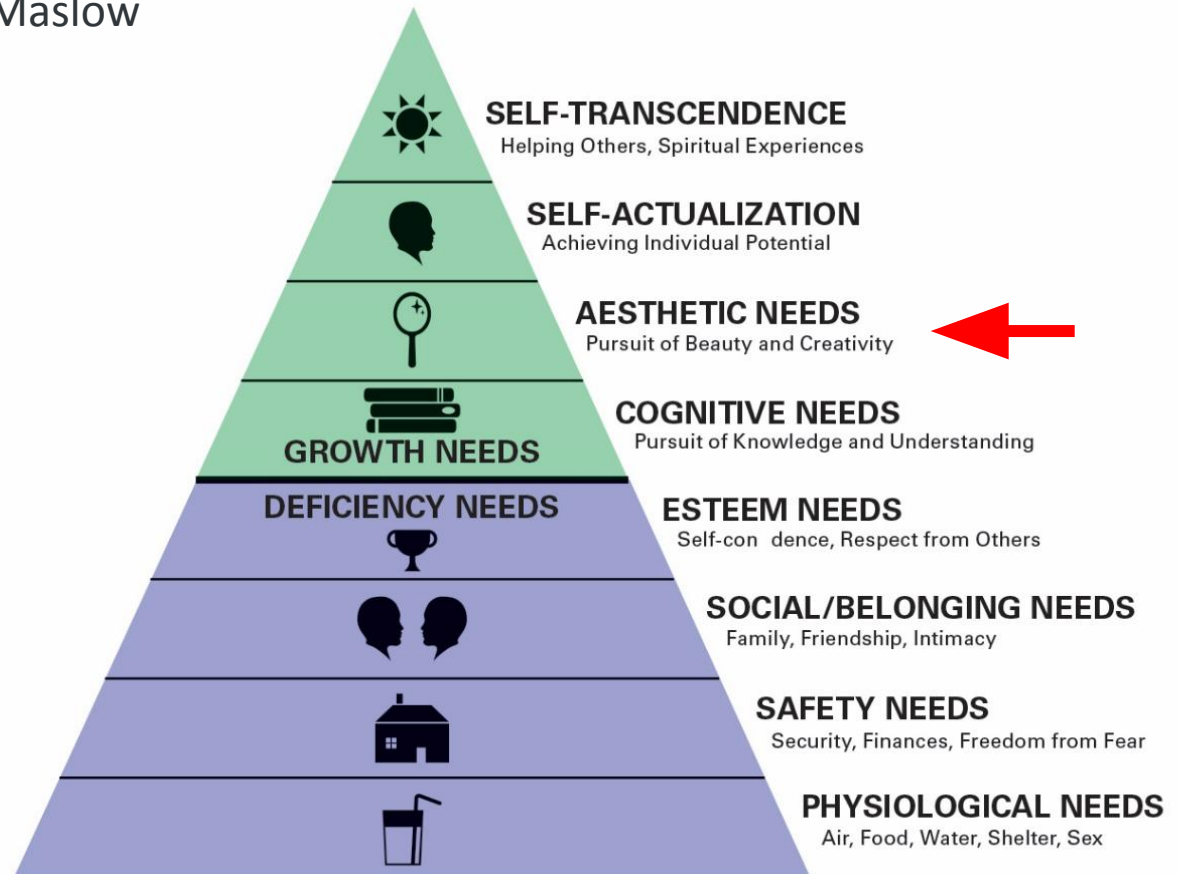
# Environmental justice and wetland conservation Interdisciplinary

## Hierarchy of Needs

Developed by Maslow

Where do most wetland projects fall along this hierarchy?

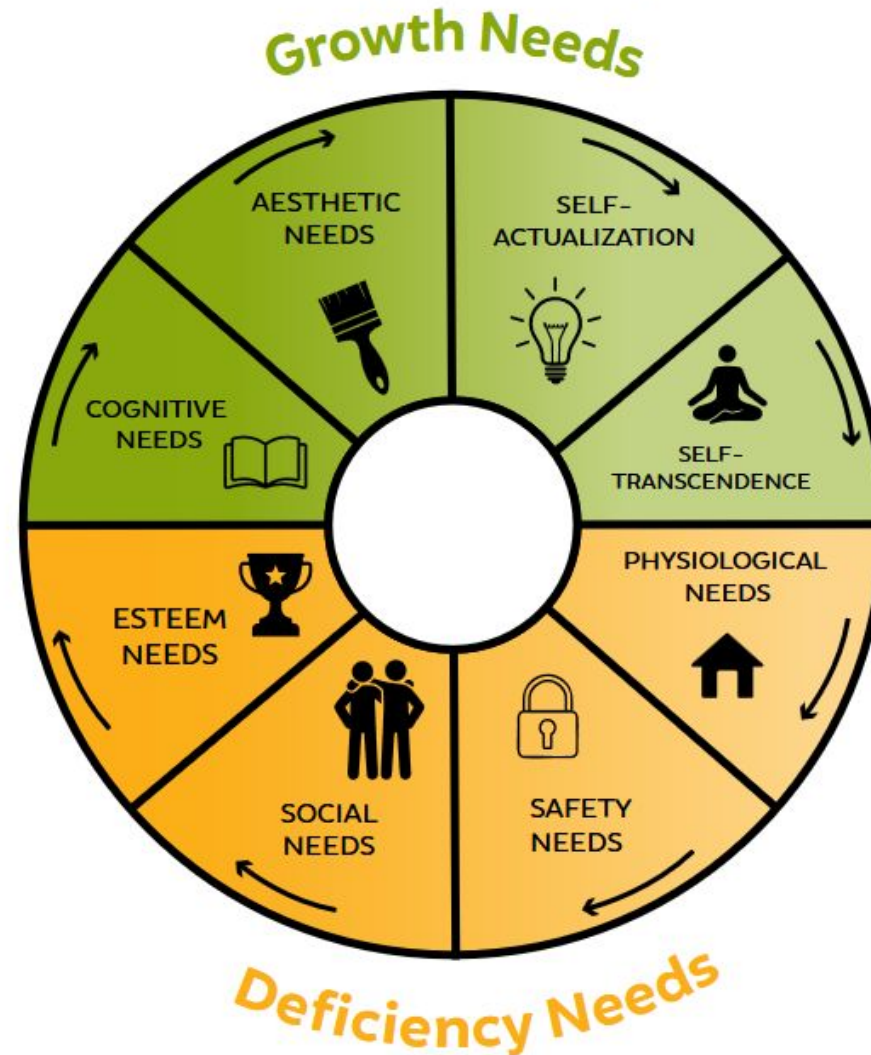
Who benefits most from these projects?



ROOT & SPIRAL

# Environmental justice and wetland conservation

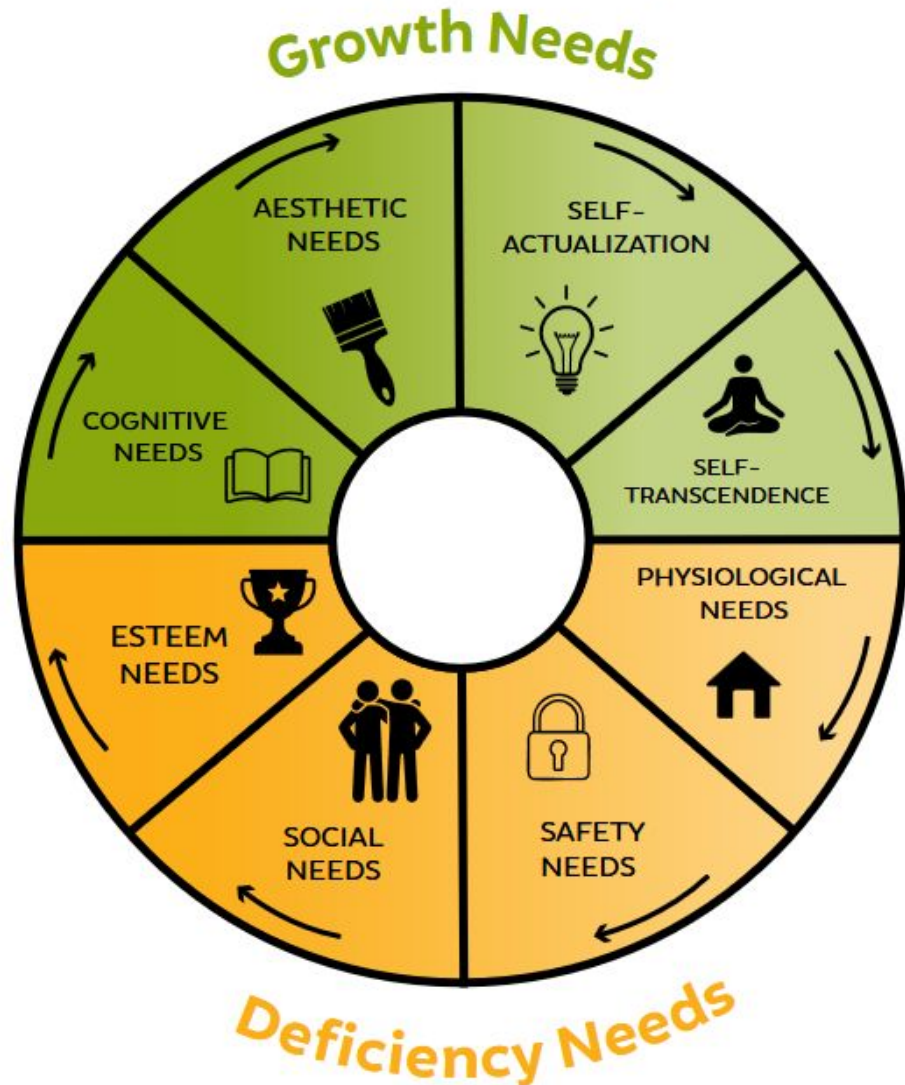
**Wealthy/Privileged**



**ROOT & SPIRAL**

# Environmental justice and wetland conservation

## Wealthy/Privileged



## Low income/Marginalized



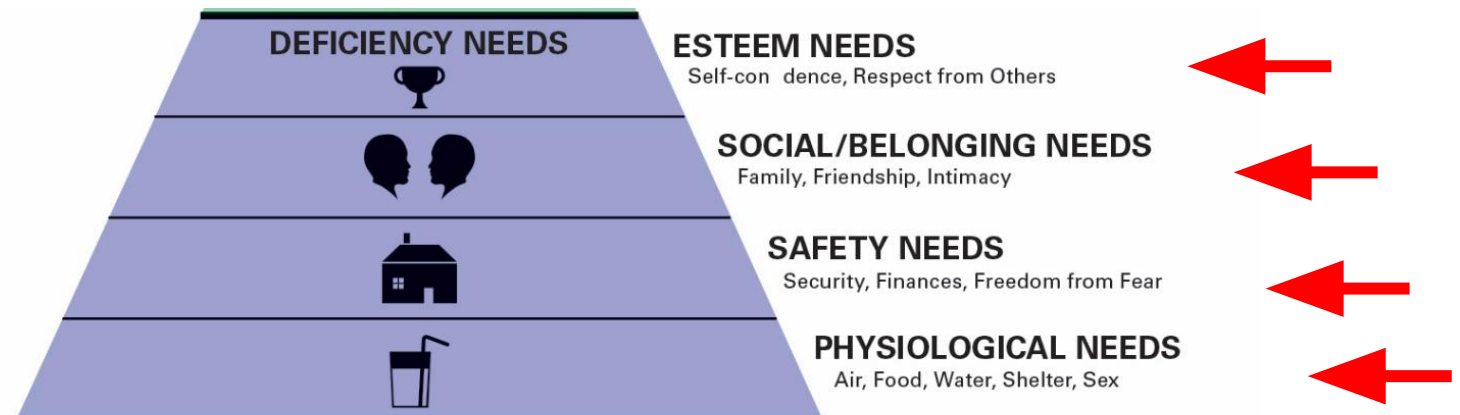
What if conservation projects focused on deficiency needs?

Now who benefits most?

# Environmental justice and wetland conservation

Wetland projects integrating deficiency needs:

1. Improving environmental health issues (clean water)
2. Adding wetlands for green space in underserved urban areas
3. Providing habitat AND local food resources
4. Preventing/mitigating flooding impact on vulnerable populations
5. Conservation jobs targeting underserved populations/youth
6. Including affected populations voices in developing solutions, better serving those populations



**ROOT & SPIRAL**

# Environmental justice and wetlands

## Clean Ohio Fund



Clean **Ohio** Fund  
Green Space Conservation

\$37.5 million in grants annually  
For environmental conservation

- green space acquisition
- protection & enhancement of river and stream corridors



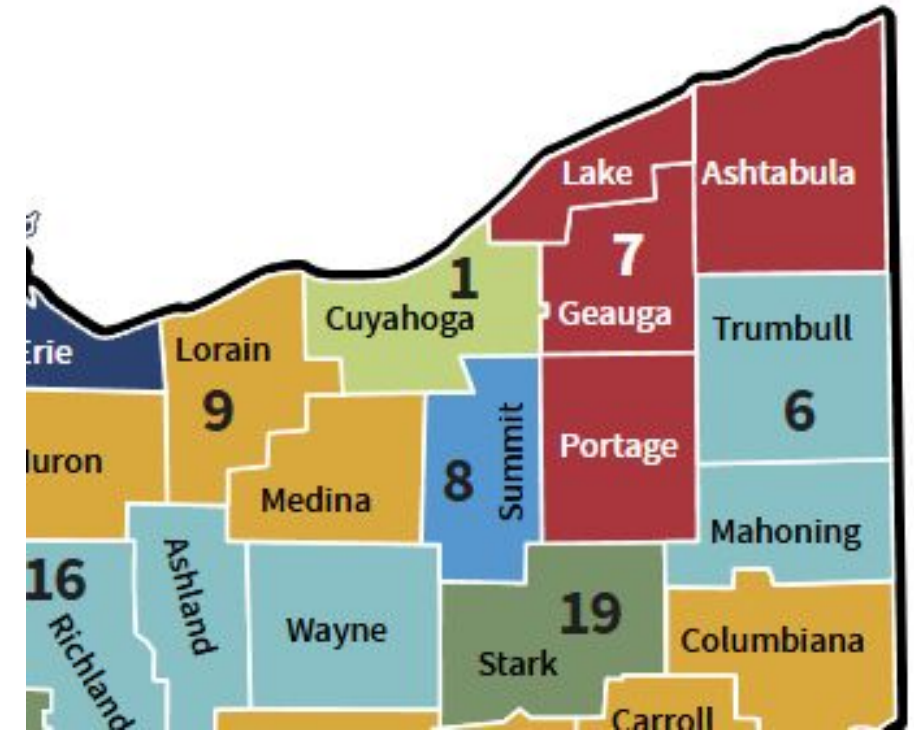
ROOT & SPIRAL

# Environmental justice and wetlands Clean Ohio Fund



**Clean Ohio Fund**  
Green Space Conservation

CRITERIA	MAXIMUM
	POINTS
<b>County Principles</b>	
Preserves	10
Enhances	10
Restores	10
Links Areas	10
Allows	10
<b>Total Principle</b>	<b>50</b>
<b>Benefits</b>	
Economic	10
Social	10
Environmental	10
<b>Total Benefit</b>	<b>30</b>
<b>Community Impact</b>	
Access to Natural Areas	10
Percent Low-income	10
Percent Minority Population	10
Access to Transit and Bikeways	10
<b>Total Impact</b>	<b>40</b>



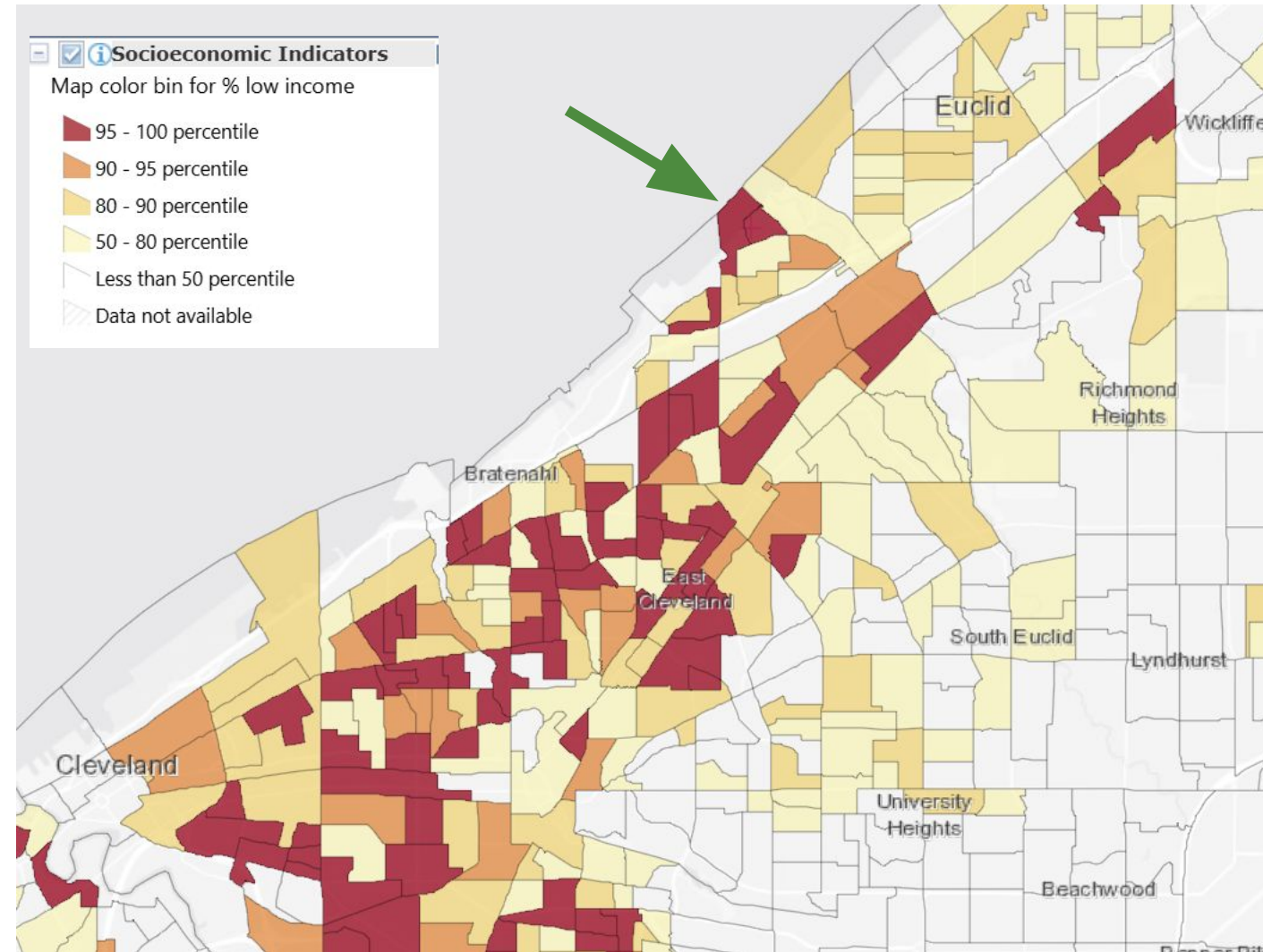
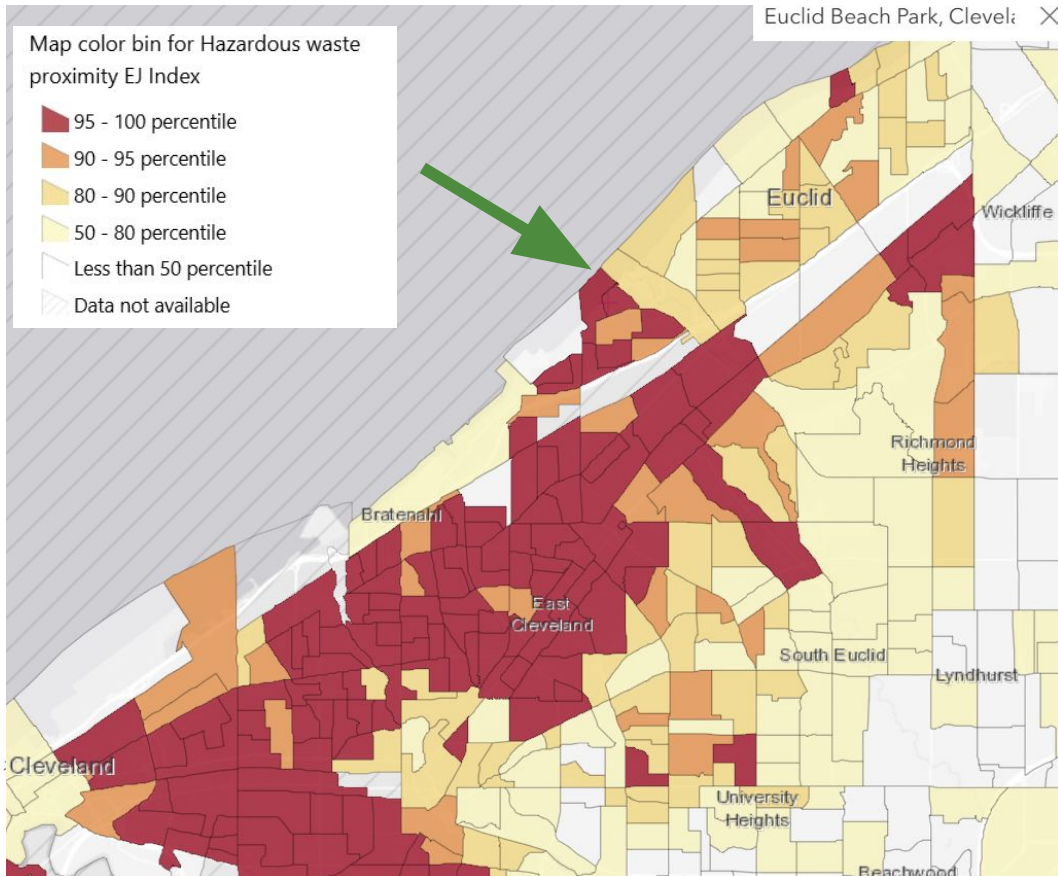
**ROOT & SPIRAL**

# Environmental justice and wetlands

## Euclid Beach Park



**Clean Ohio Fund**  
Green Space Conservation



# Environmental justice and wetlands Euclid Beach Park



Clean **Ohio** Fund  
Green Space Conservation



ROOT & SPIRAL

# Environmental justice and wetlands Euclid Beach Park



Clean **Ohio** Fund  
Green Space Conservation

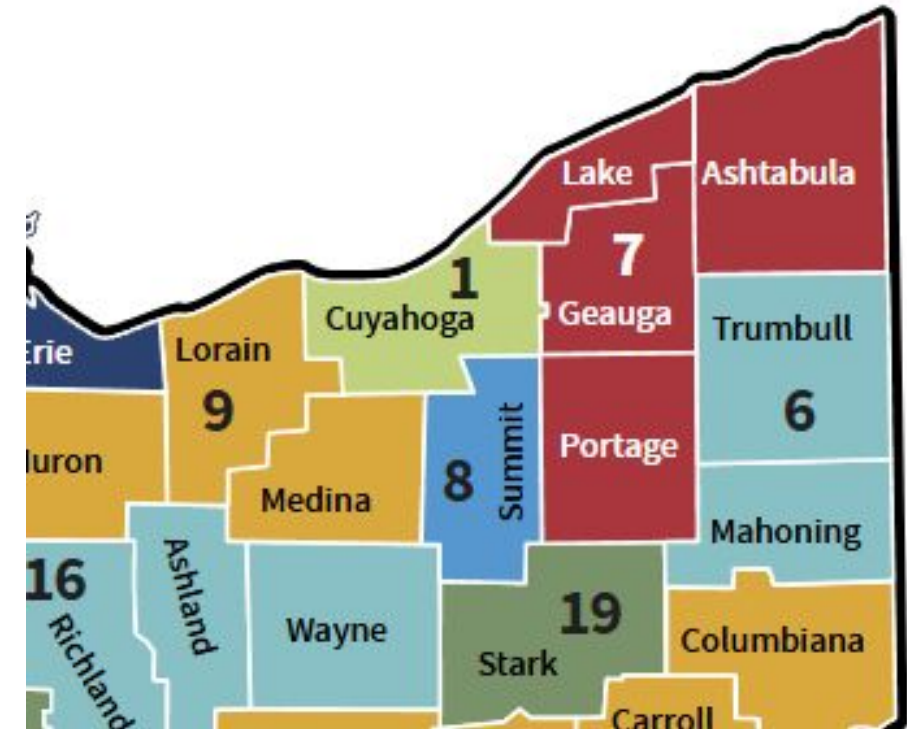


ROOT & SPIRAL

# Environmental justice and wetlands Clean Ohio Fund



CRITERIA	MAXIMUM
	POINTS
<b>County Principles</b>	
Preserves	10
Enhances	10
Restores	10
Links Areas	10
Allows	10
<b>Total Principle</b>	<b>50</b>
<b>Benefits</b>	
Economic	10
Social	10
Environmental	10
<b>Total Benefit</b>	<b>30</b>
<b>Community Impact</b>	
Access to Natural Areas	10
Percent Low-income	10
Percent Minority Population	10
Access to Transit and Bikeways	10
<b>Total Impact</b>	<b>40</b>



# Environmental justice and wetlands

## Interdisciplinary



**Cindy Blackstock**  
FIRST NATIONS CARING SOCIETY

The logo for Ashoka Canada, featuring a stylized tree and a lightning bolt icon next to the text "ASHOKACANADA".

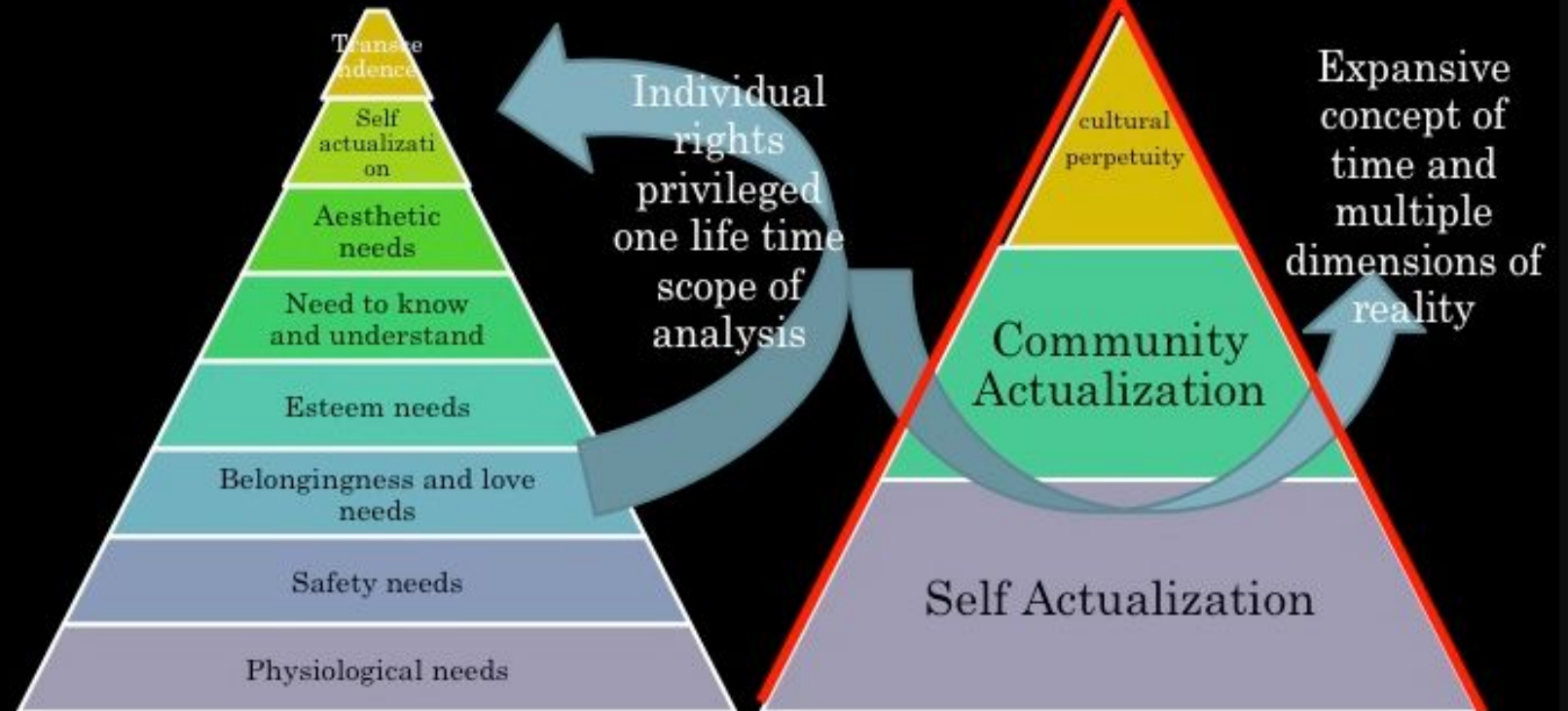
“Breath of life” as presented by Dr. Cindy Blackstock

**ROOT & SPIRAL**

MASLOW'S HIERARCHY OF NEEDS (INFORMED BY BLACKFOOT NATION (ALTA))

**Western Perspective**

**First Nations Perspective**



# Environmental justice and wetlands

## Interdisciplinary

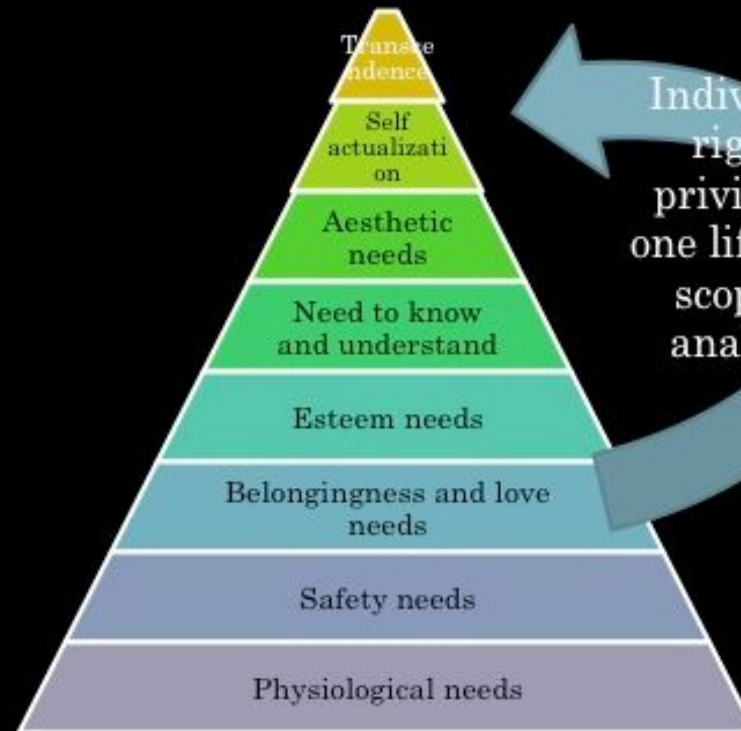


Maslow did not “fully situate the individual within the context of community.” If he had done so, and also more deeply integrated the Blackfoot perspective, “the model would be centered on multi-generational community actualization versus on individual actualization and transcendence.”

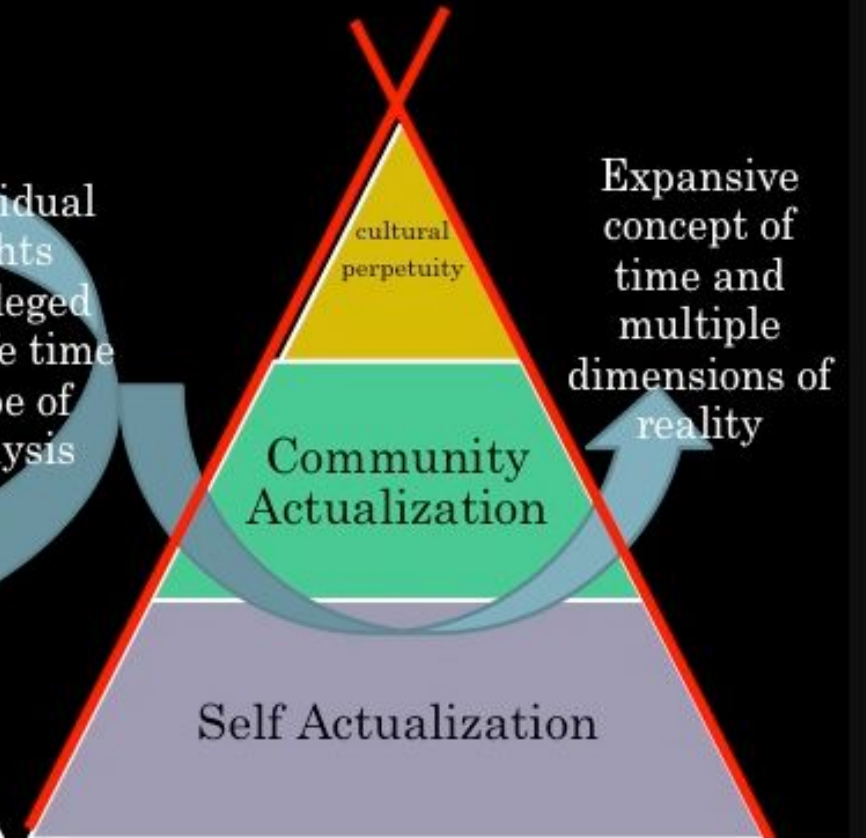
**ROOT & SPIRAL**

### MASLOW'S HIERARCHY OF NEEDS (INFORMED BY BLACKFOOT NATION (ALTA))

#### Western Perspective



#### First Nations Perspective



Individual rights privileged one life time scope of analysis

Expansive concept of time and multiple dimensions of reality

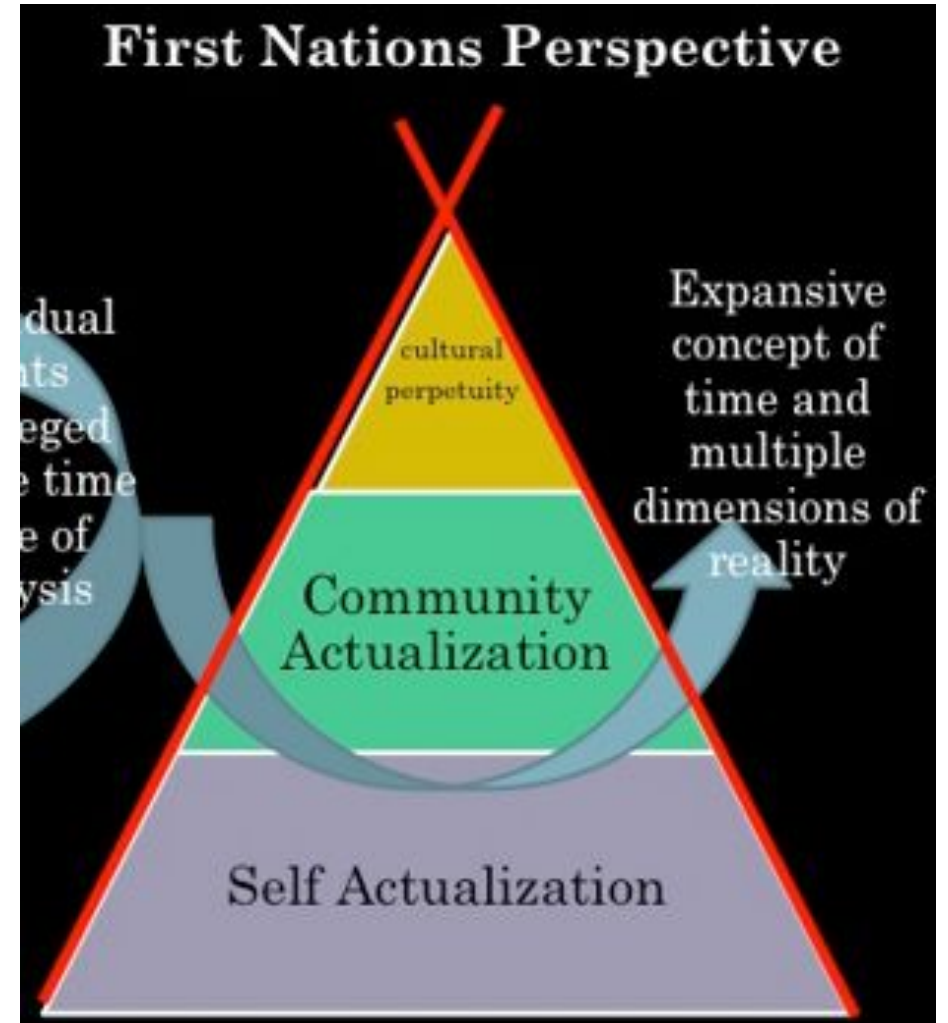
# Environmental justice and wetlands Interdisciplinary



## Community actualization:

the work of meeting basic needs is a community responsibility.

**ROOT & SPIRAL**

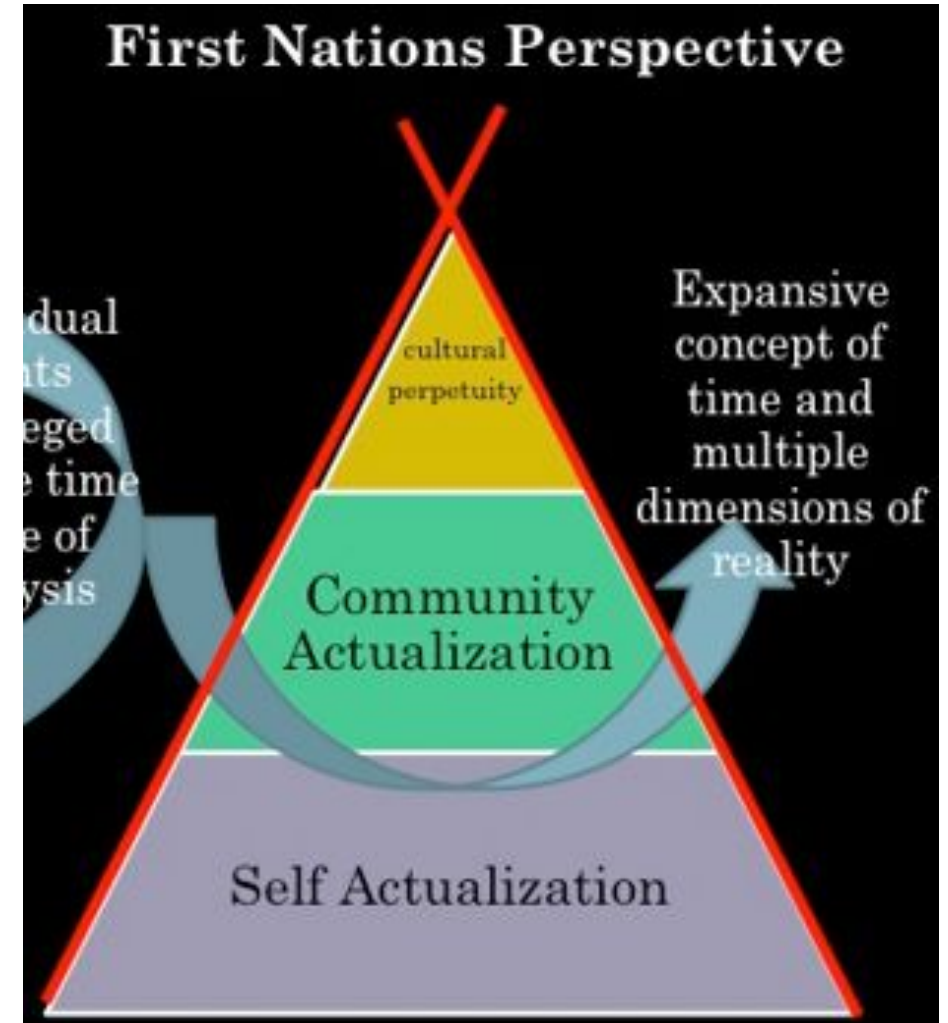


# Environmental justice and wetlands Interdisciplinary



## Cultural perpetuity:

“... you will be forgotten, but you have a part in ensuring that your people’s important teachings live on.”



**ROOT & SPIRAL**

# Environmental justice and wetlands

## Interdisciplinary



Terry Cross, Native American Child welfare expert

Explains the breath of life in a relational worldview model

- Fluid, cyclical view of time
  - Ecosystems cycle with time (lakes turn into wetlands, back to lakes)
- Each aspect of life is related
  - Base of ecology is interactions!
- Services aim to restore balance
  - Wetland restoration also has this aim
- Interventions may not be directed at “symptoms”
  - Wetland restoration isn’t successful if its just treating symptoms (e.g., retention ponds can also mitigate flooding)
- Underlying question is “how?”



**ROOT & SPIRAL**

# Environmental justice and wetlands Interdisciplinary



Wetlands and their services will persist in perpetuity and provide for future generations.

Maintaining wetlands is a community responsibility. Empower local citizens to feel connected to and responsible for stewardship.

Wetlands help address people's basic needs AND aesthetic needs

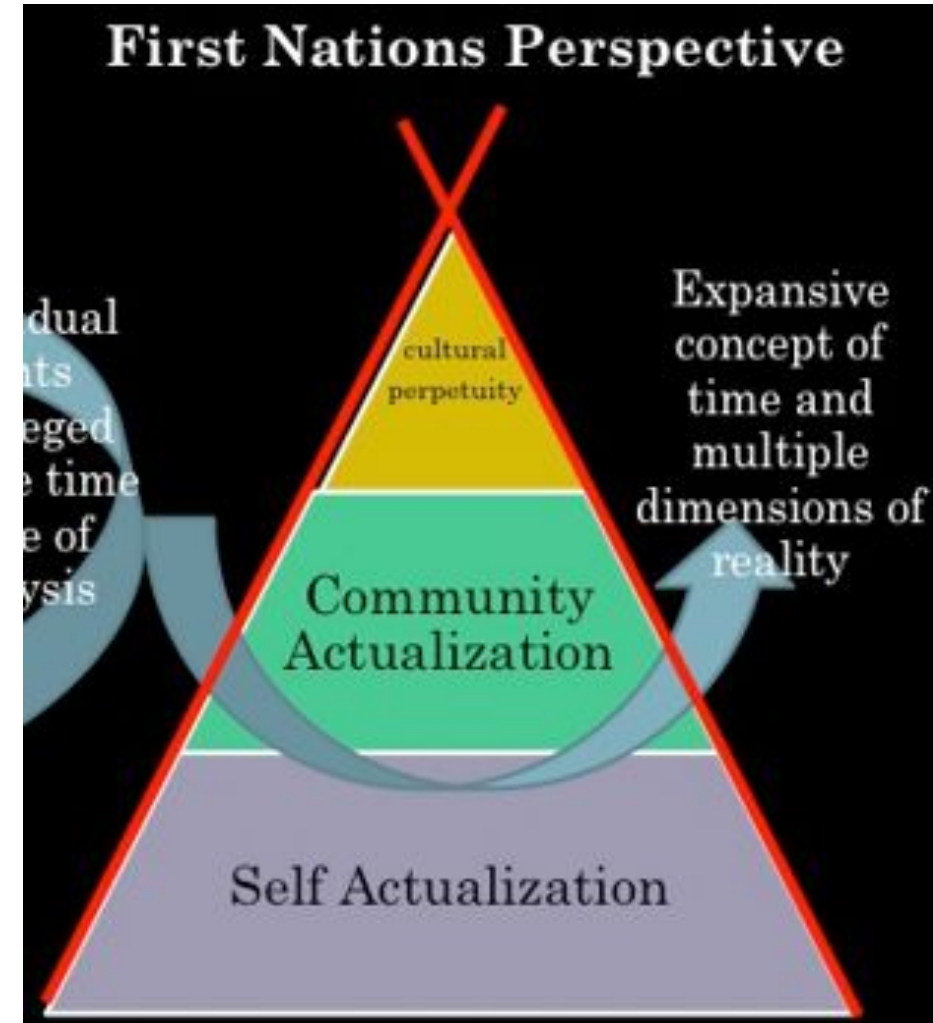
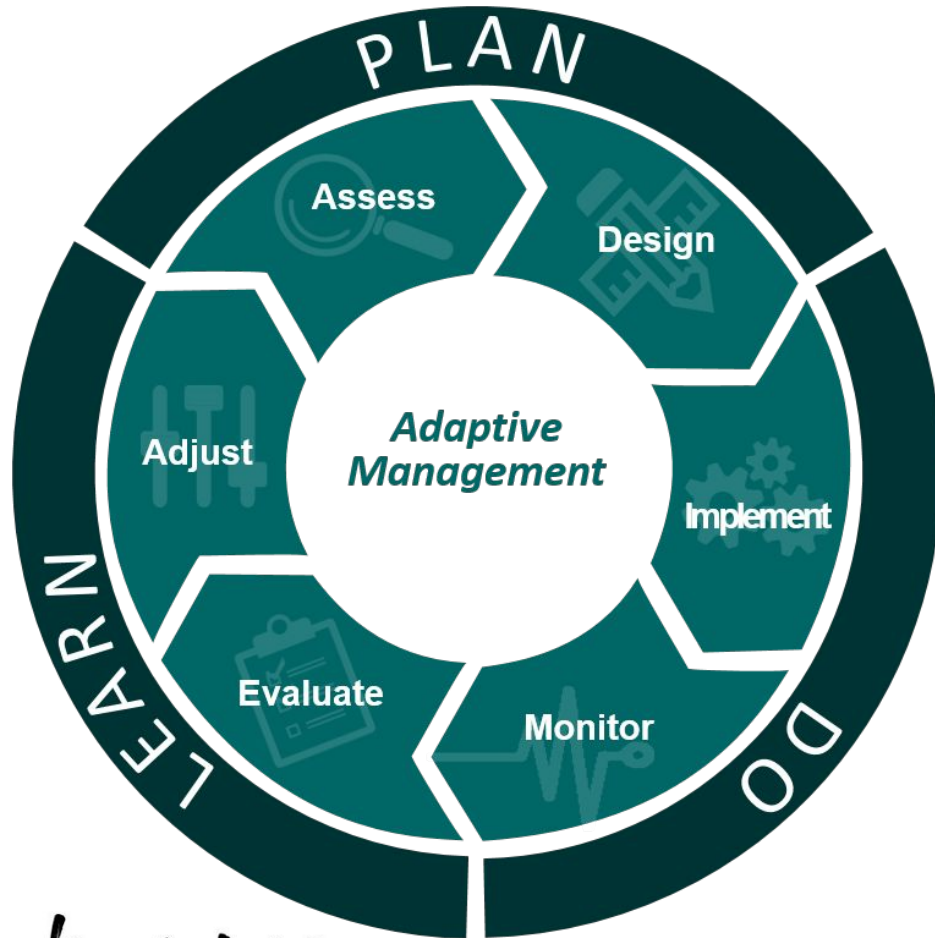


# Environmental justice and wetlands



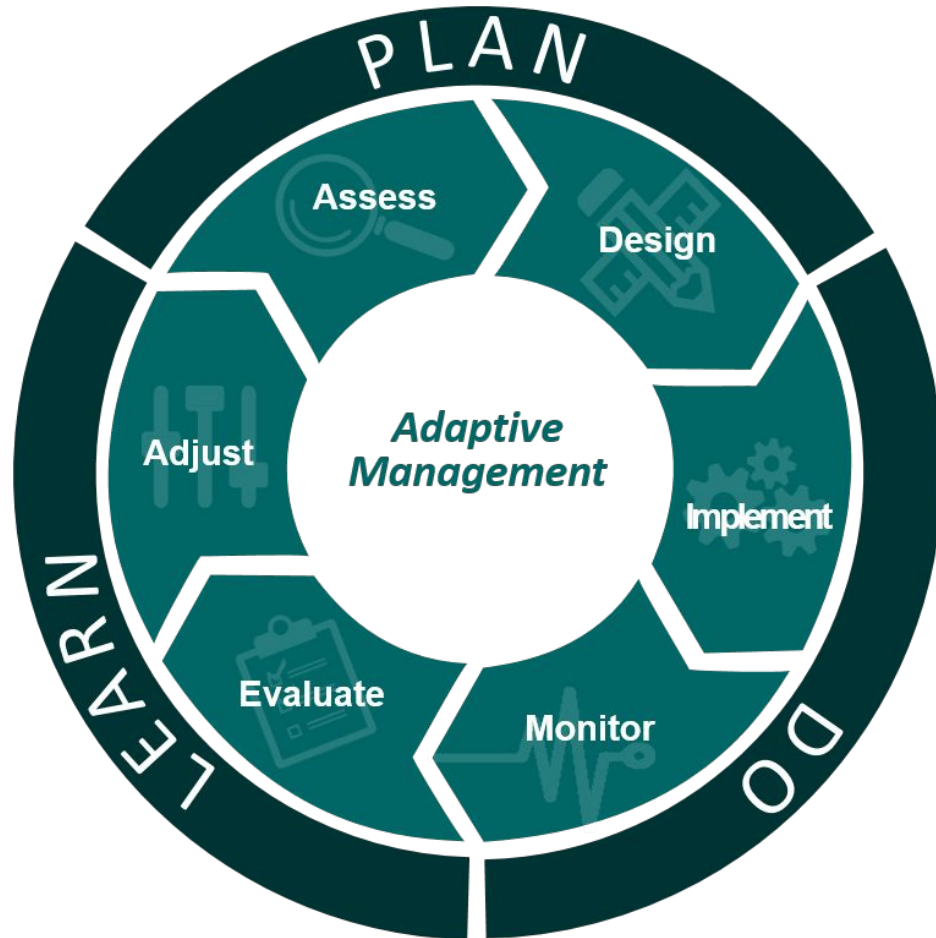
Adaptive Management wheel.  
Credit: ESSA Technologies, Ltd.

## Interdisciplinary

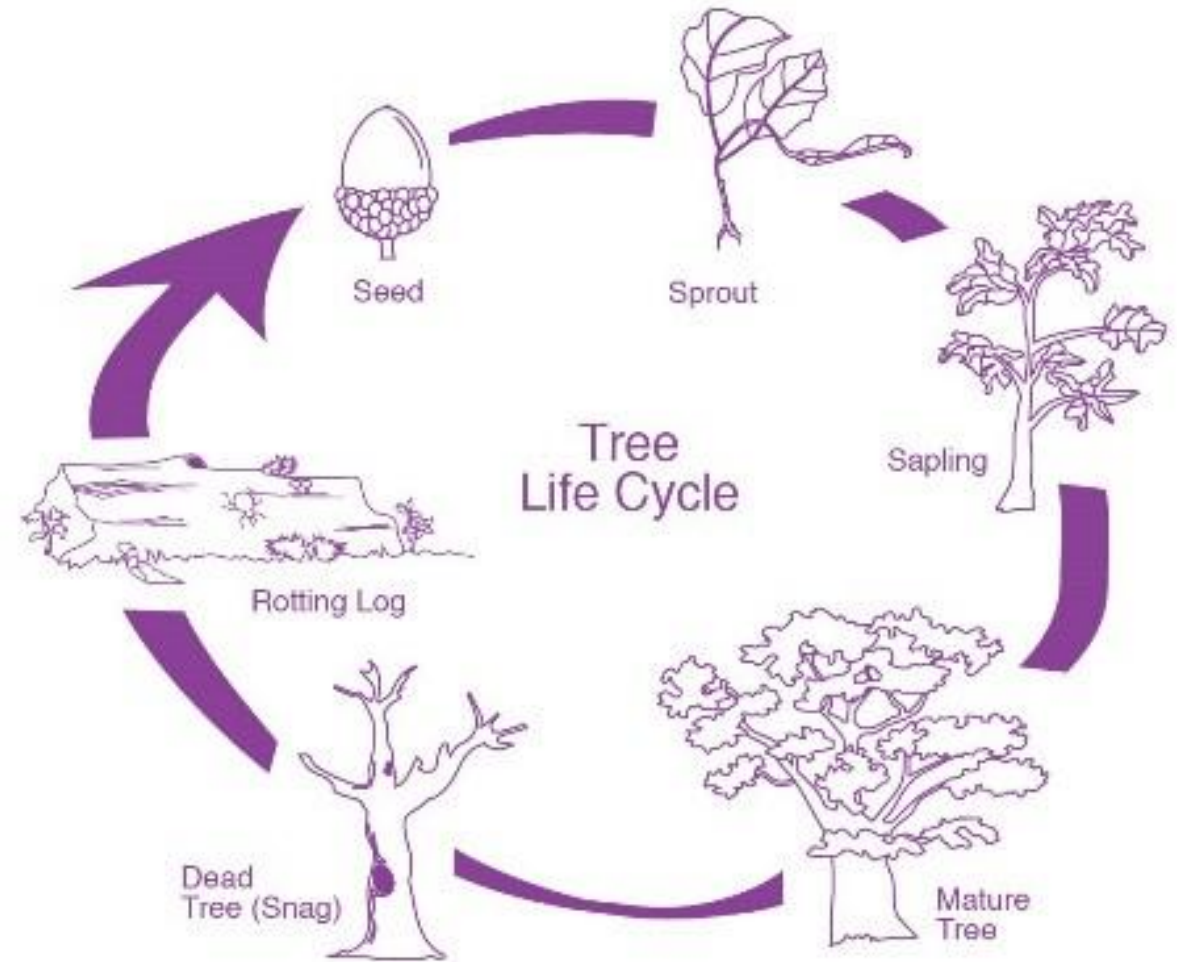


ROOT & SPIRAL

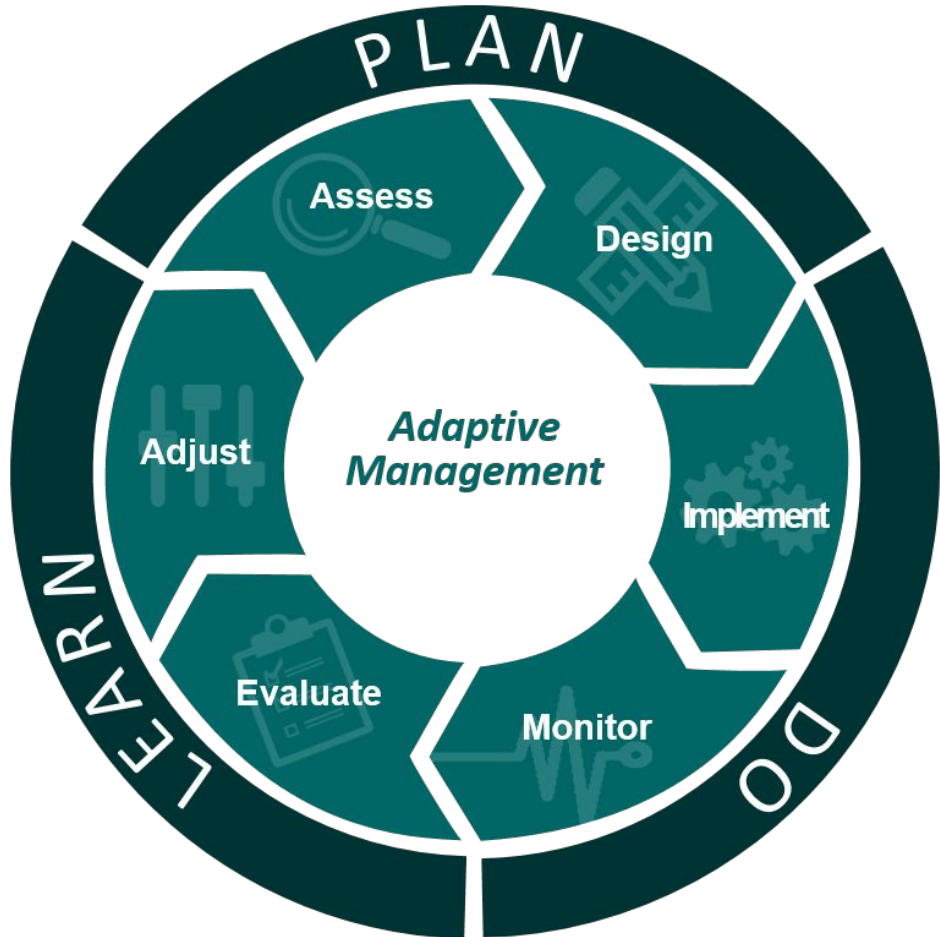
# Environmental justice and wetlands Interdisciplinary



**Adaptive Management wheel.**  
**Credit: ESSA Technologies, Ltd.**

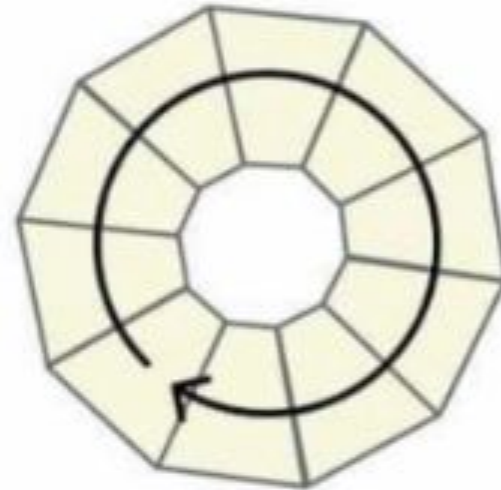


# Environmental justice and wetlands Interdisciplinary



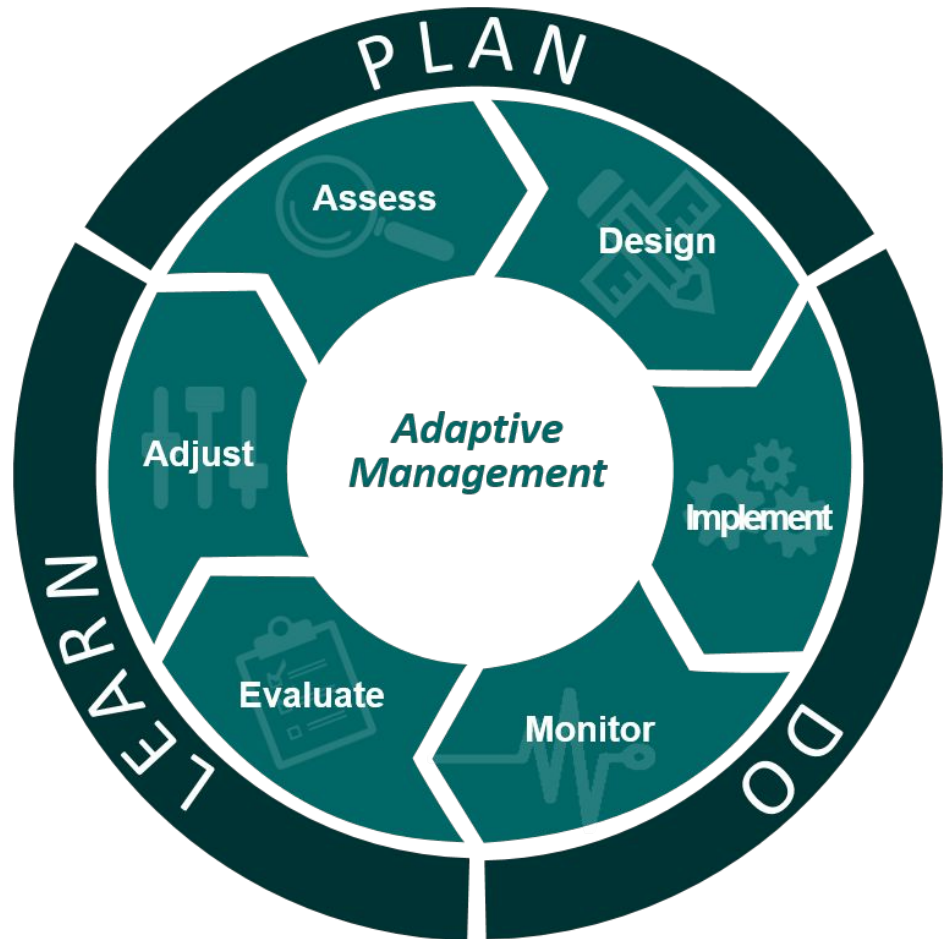
**Adaptive Management wheel.**  
Credit: ESSA Technologies, Ltd.

YOU'RE NOT GOING  
IN CIRCLES...

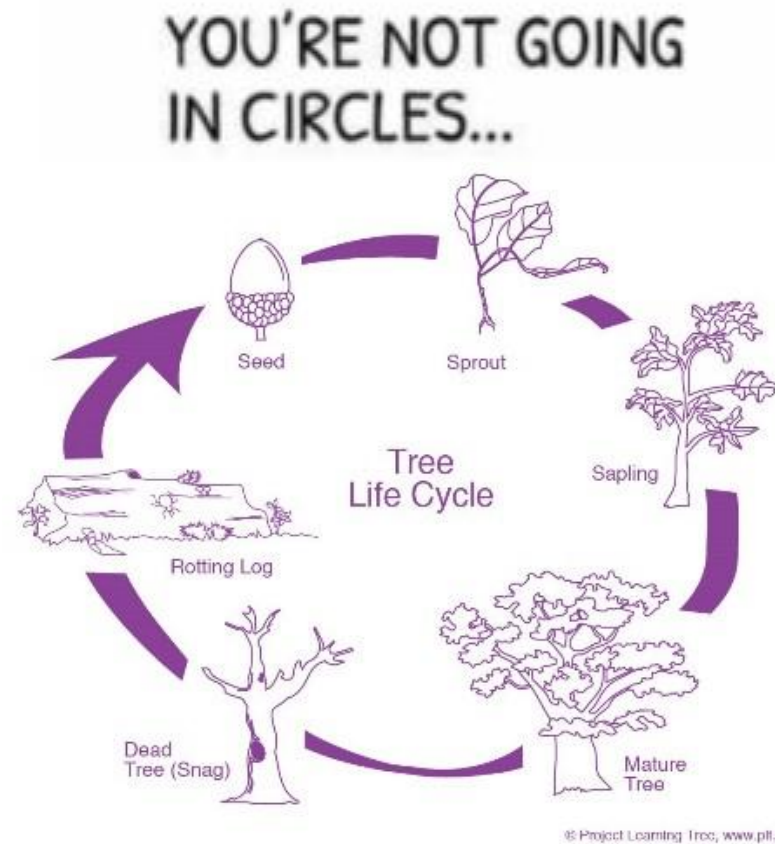


...YOU JUST NEED  
TO SEE DIFFERENTLY

# Environmental justice and wetlands Interdisciplinary



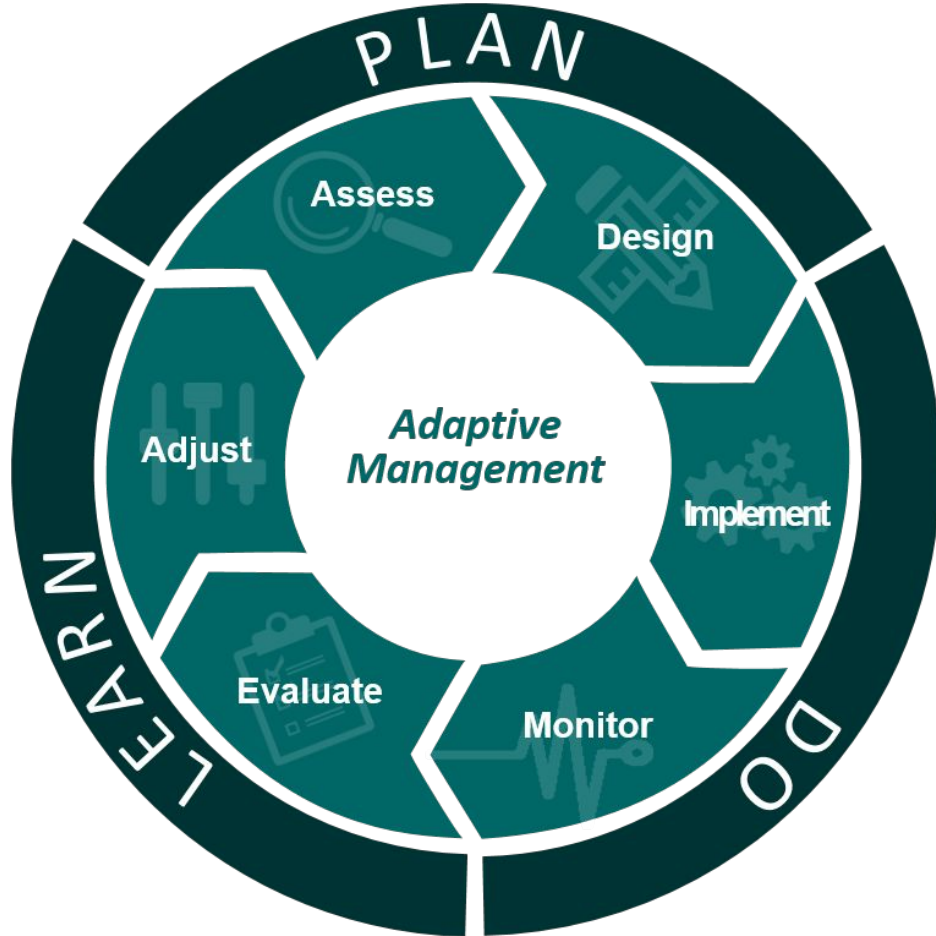
**Adaptive Management wheel.**  
Credit: ESSA Technologies, Ltd.



...YOU JUST NEED  
TO SEE DIFFERENTLY

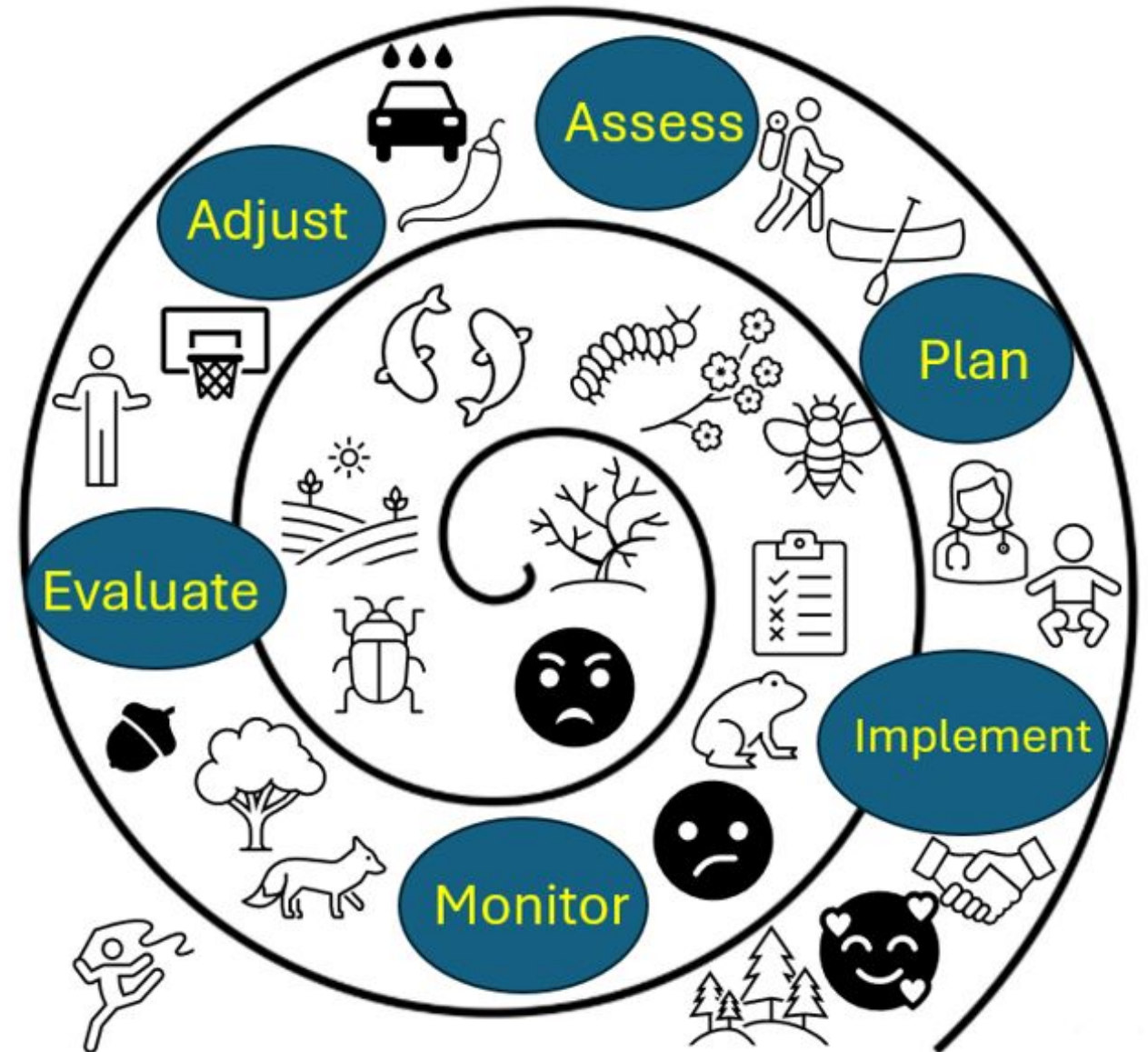


# ROOT & SPIRAL



Adaptive Management wheel.  
Credit: ESSA Technologies, Ltd.

## Adaptive management wheel integrating human needs



# Environmental justice and conservation



**Bees for the poor- a song for pollinator justice**

**Lyrics by Rebecca Swab**

**Music by Rachel Lark**



When you have money  
You get more honey  
More bees and parks, paths and green  
Fresh air, nice plants, water that's clean

When you are poor  
You get a high score  
For toxic neighbors, air pollution  
Some might say there's no solution

We can all share clean air  
But first we need to repair  
Line our rivers with branches, Fill our cities with flowers  
Plant them in the slums, give the people back their power  
Let's give bees to the poor  
Let's give bees to the poor

**ROOT & SPIRAL**

# Peepers aren't just for the privileged

## Acknowledgements

### Community

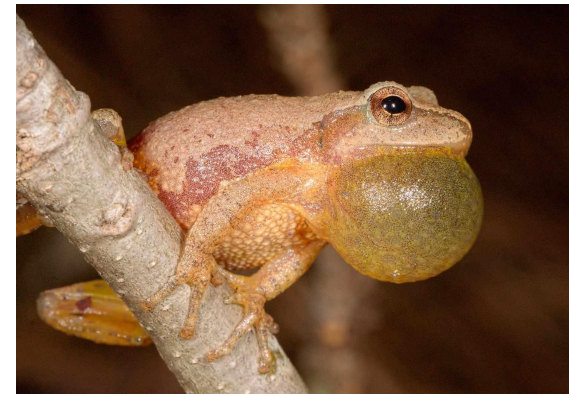
Food not bombs volunteers

Students at OSU

Community members in Columbus & Cleveland

Conservationists across the midwest

Cycle workshop participants at local arts & community festivals (Mosaic, Equillumia)



**ROOT & SPIRAL**



# Peepers aren't just for the privileged: reframing goals will help wetlands address environmental justice

Beck Swab (they/them), PhD

Root & Spiral

Beck.Swab@proton.me



Read my ESA commentary  
article on reframing EJ



Visit my website  
[Rootandspiral.com](https://Rootandspiral.com)

**ROOT & SPIRAL**